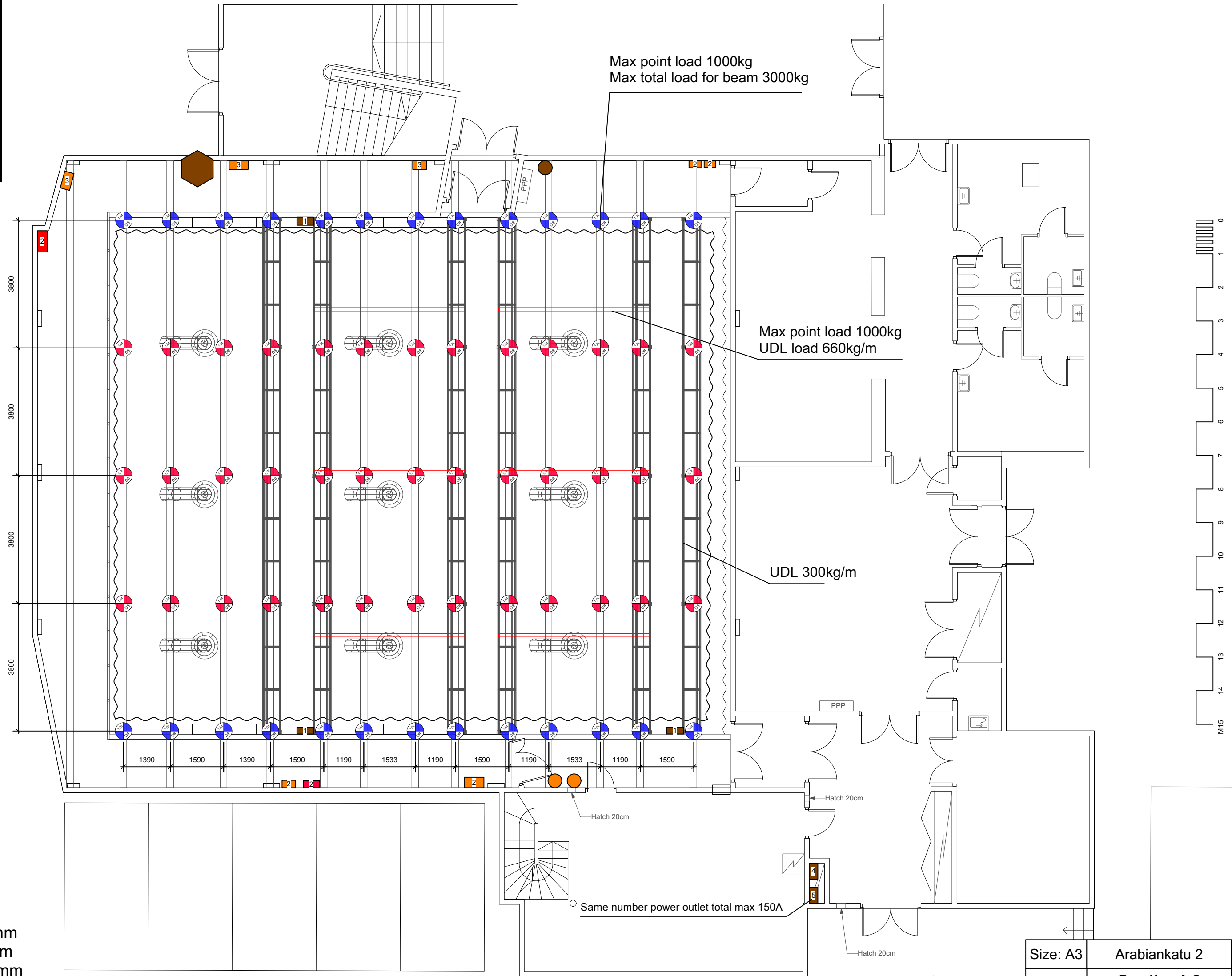


Max point load 1000kg  
Max total load for beam 3000kg

Max point load 1000kg  
UDL load 660kg/m

UDL 300kg/m

Same number power outlet total max 150A



-  400a powerlock
-  63a 1st. Floor
-  63a 2nd. Floor
-  63a 3rd. Floor
-  32a 1st. Floor
-  16a 3rd. Floor
-  I-beam
-  Rig point
-  Bridle point

Floor to bridge 6200mm  
Floor to beam 8200mm  
Floor to I-beam 8000mm

Size: A3	Arabiankatu 2
1:100	Sudio A2